

Monday

Our reading strategy is...

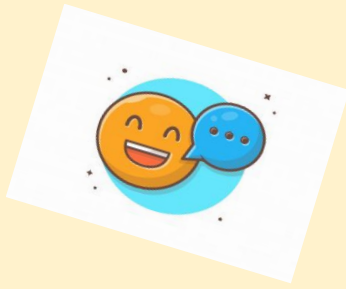
Inferring

Inferencing is when you use clues from the picture, the text and prior knowledge to work out something the author doesn't tell you.

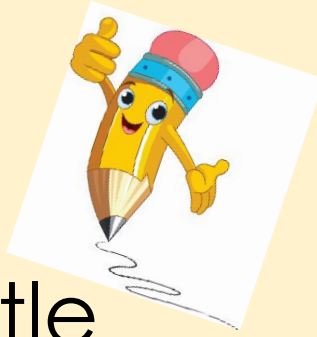
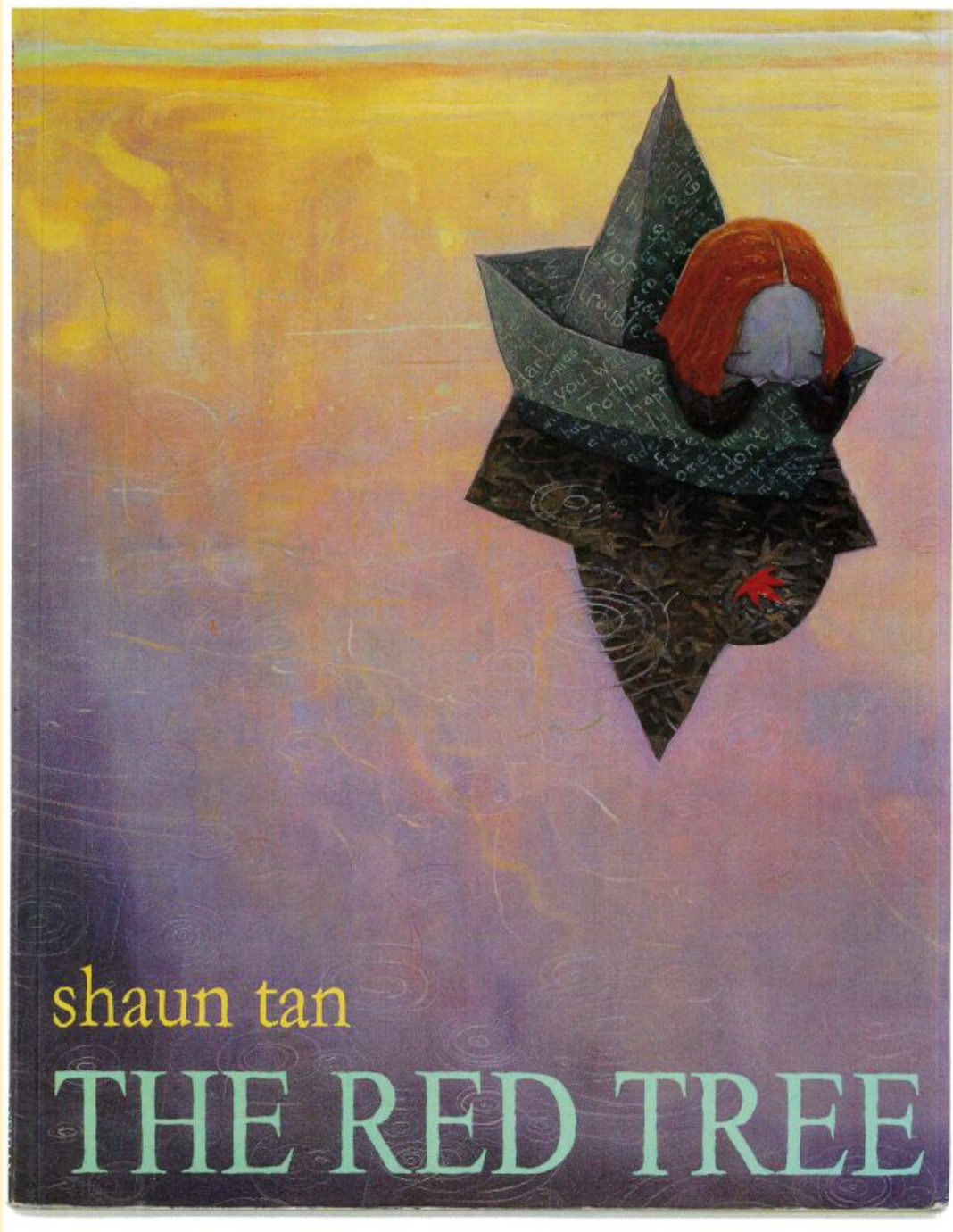
An inference is an educated guess.

Inferring Stems

- The word * tells me...
 - The part * tells me...
- This makes me think that...
 - I think this character...
 - I think the setting is...
 - I think the mood is...
- I think the writer's viewpoint is...
- I think the character's viewpoint is...



Read each of
the sentence
stems out loud.



How do you think the little girl is feeling?

Inferring stems

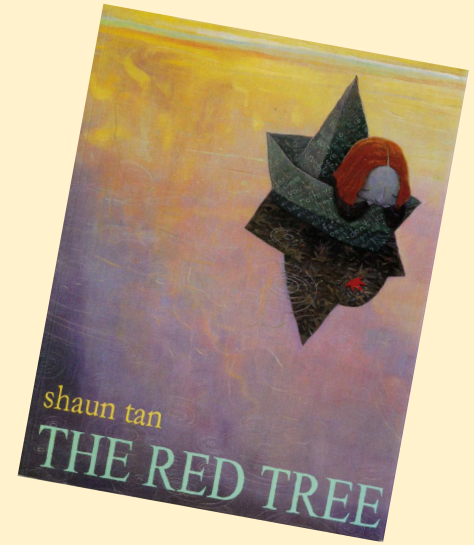
- I think this character...
- ... makes me think that...

Use the sentence stems to help you.

Tuesday

Our reading strategy is...

Inferring



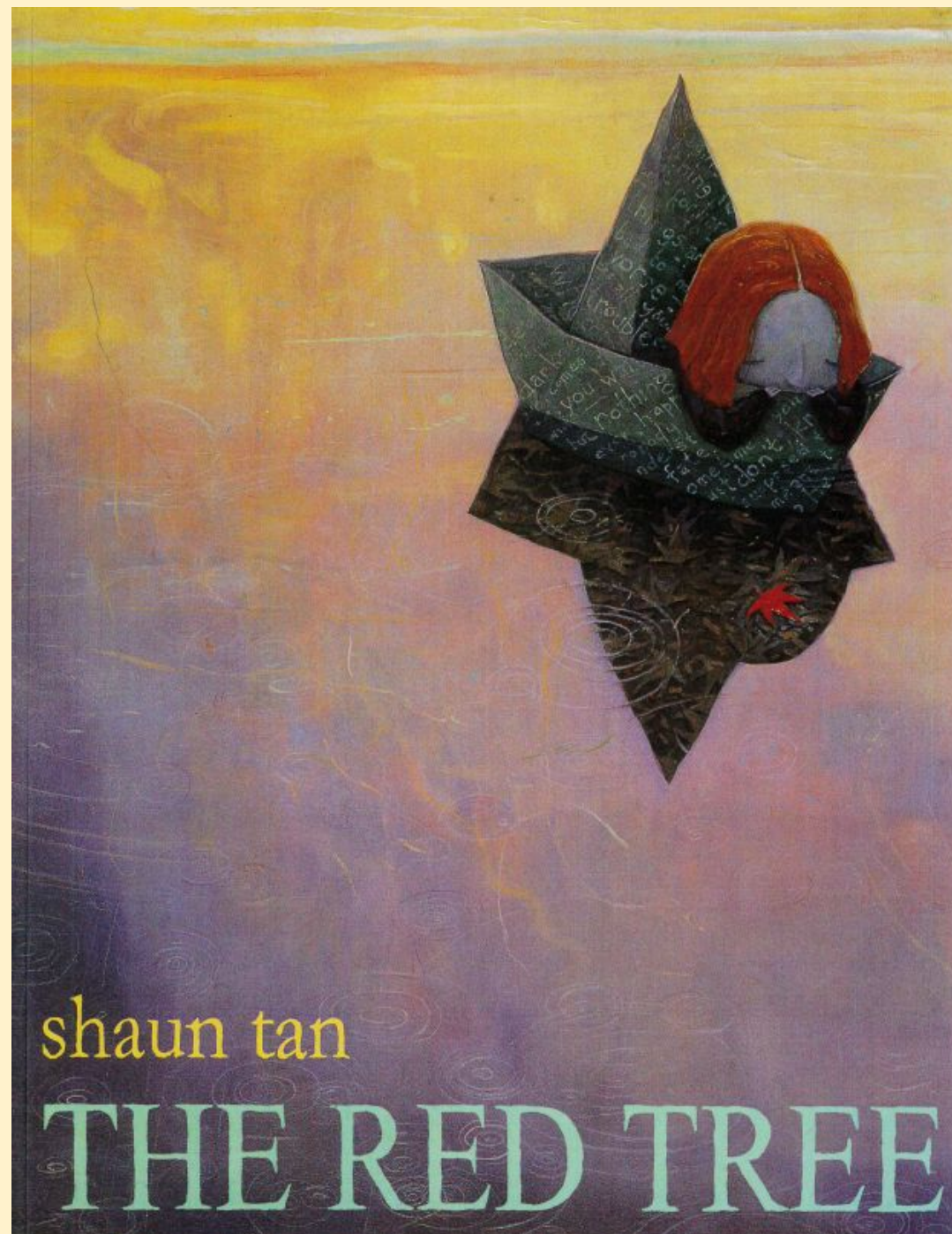
Inferring Stems

The word *tells me

What does it mean to
infer?

Can you remember
any of our sentence
stems?

Let's read our
story. Try and read
it out loud.





a
b
c
d
e
f
g
h
i
j
k
l
m
n
o
p
q
r
s
t
u
v
w
x
y
z
.
,
-
+
=





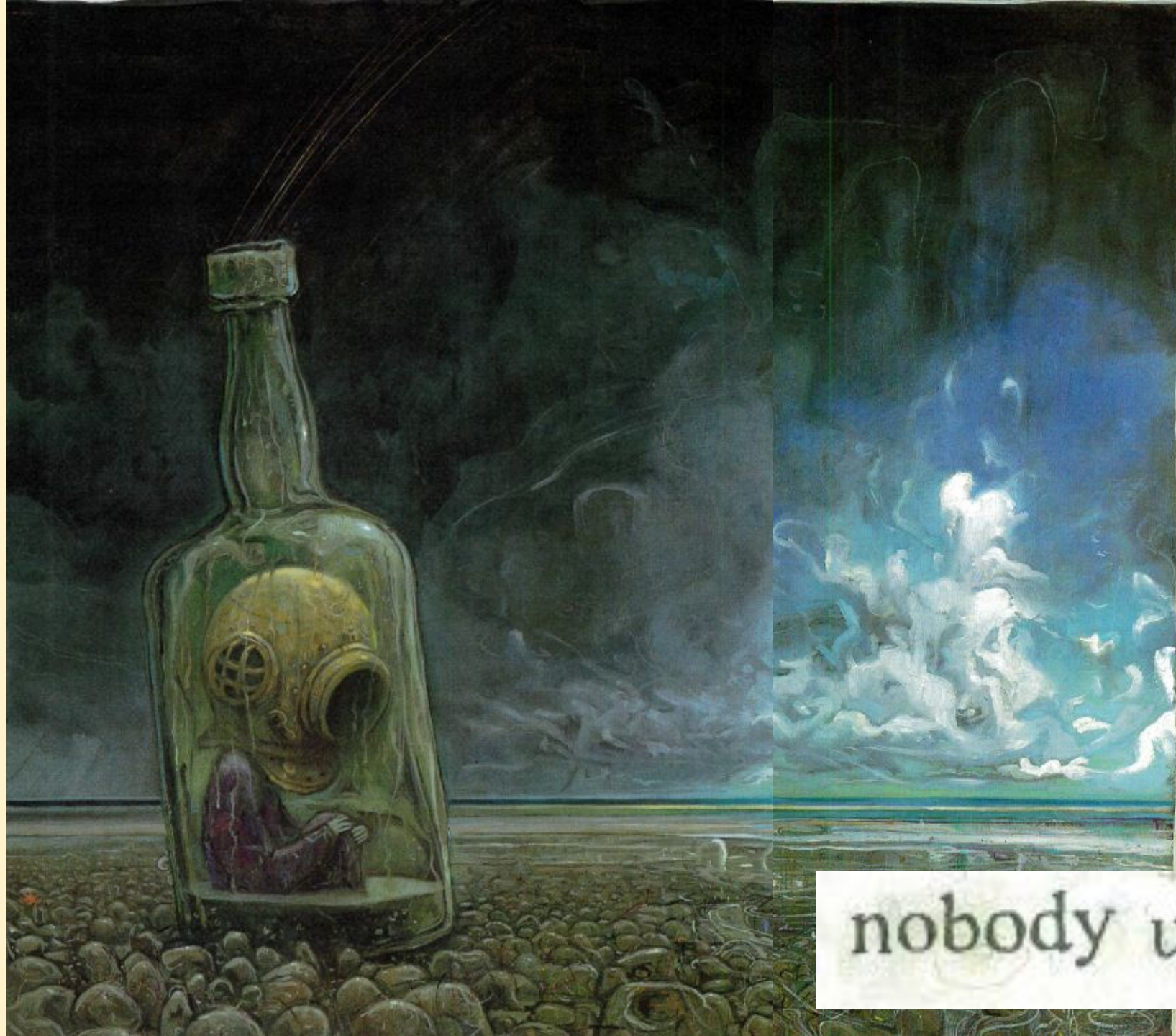
sometimes the day begins
with nothing to look forward to



and things go from bad to worse

darkness
overcomes you



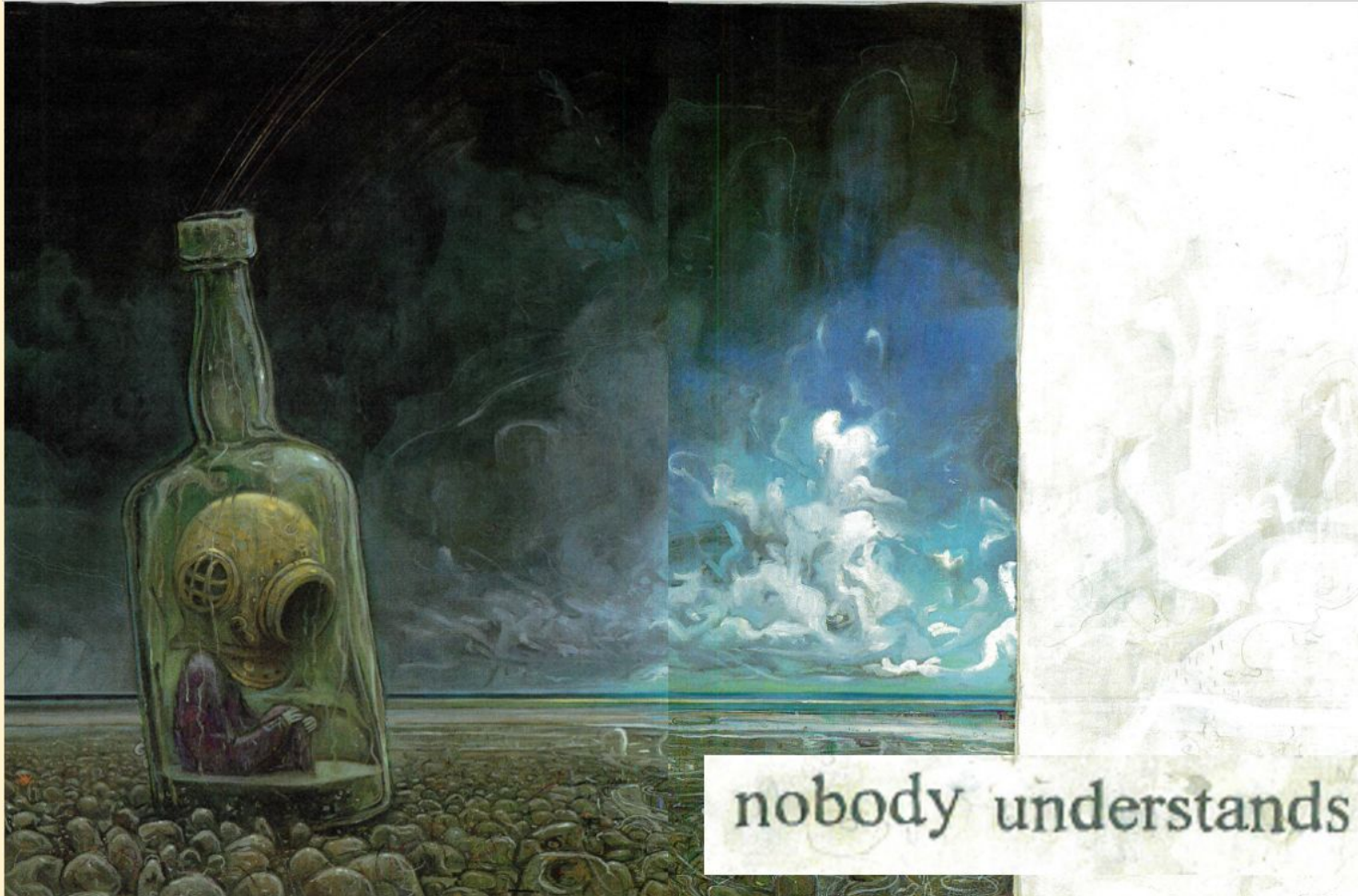


nobody understands

Let's review...

What is a setting?

A setting is where a story takes place. The setting could be a small, dusty village or a deep, dark wood.



What is the setting for this part of the story?

Inferring stems

- I think the setting is...

Let's review...

What is the mood of a story?

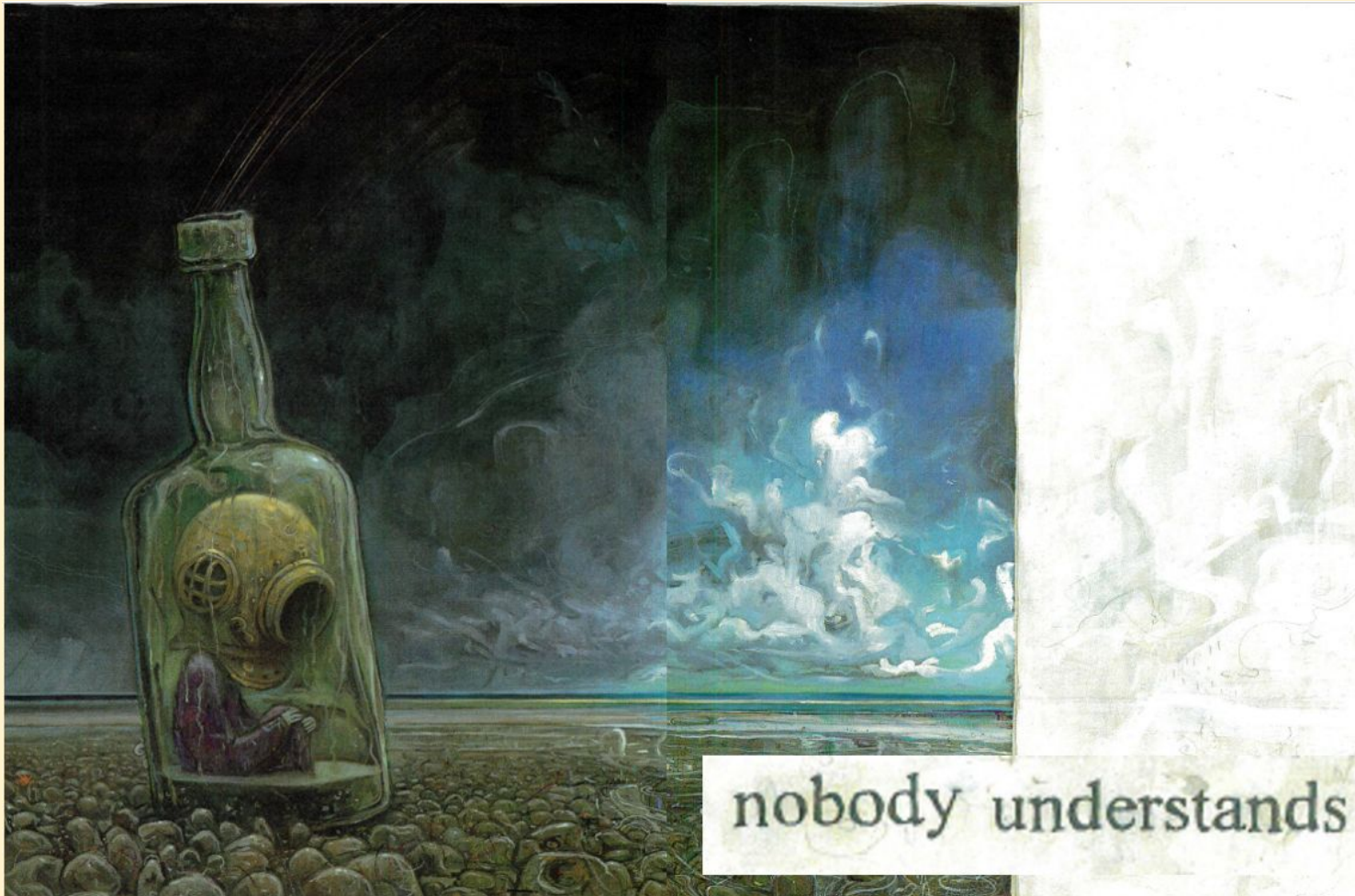
The mood of the story is how the setting, characters and events in the story make the reader.



What do you think the mood of this part of the story is?

Inferring stems

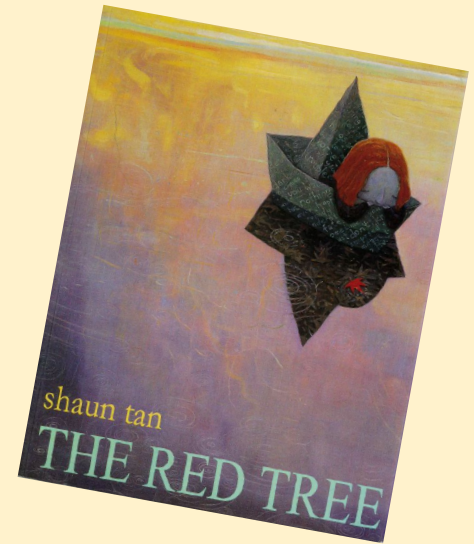
- I think the mood is...



Wednesday

Our reading strategy is...

Inferring



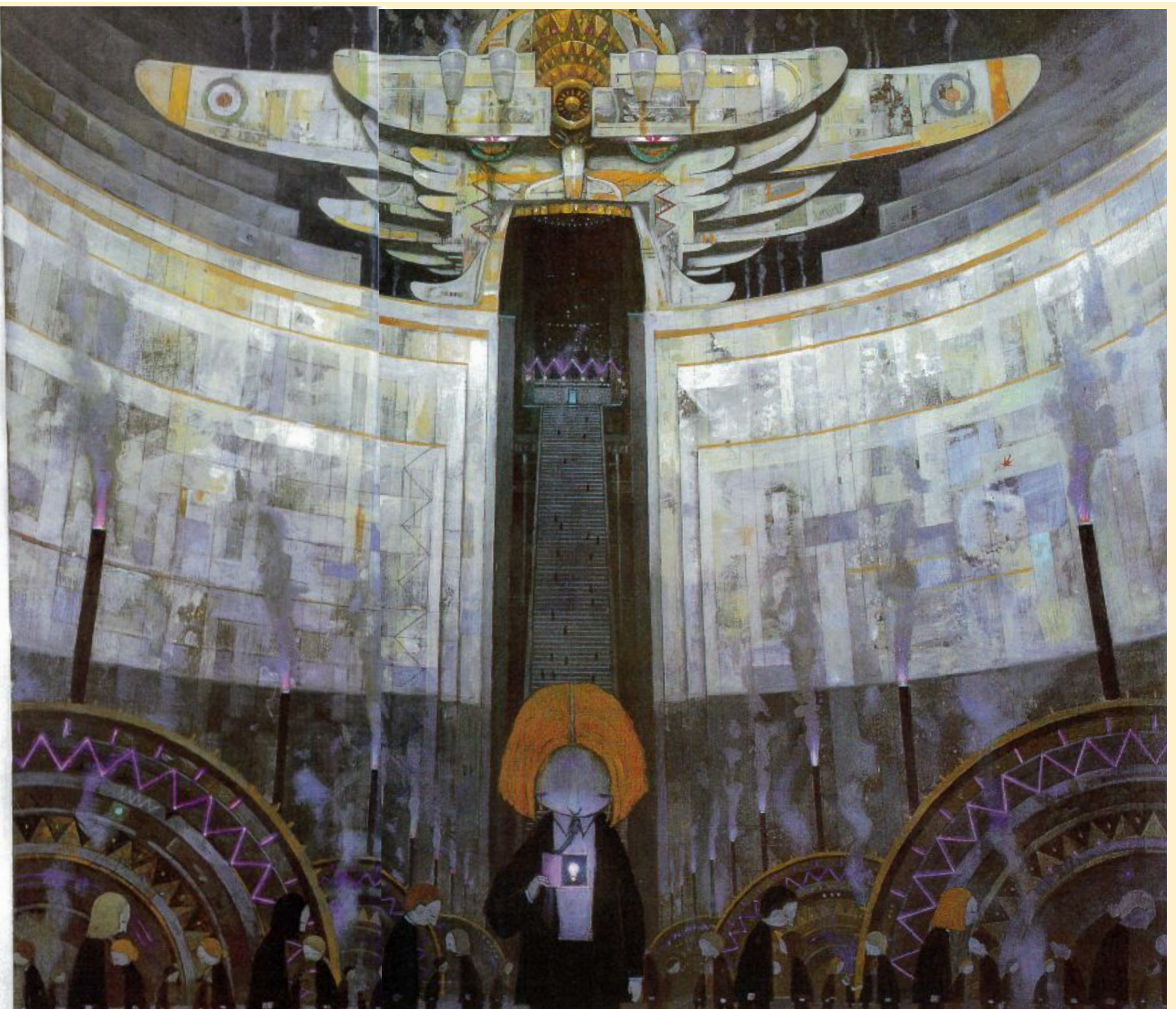
Inferring Stems

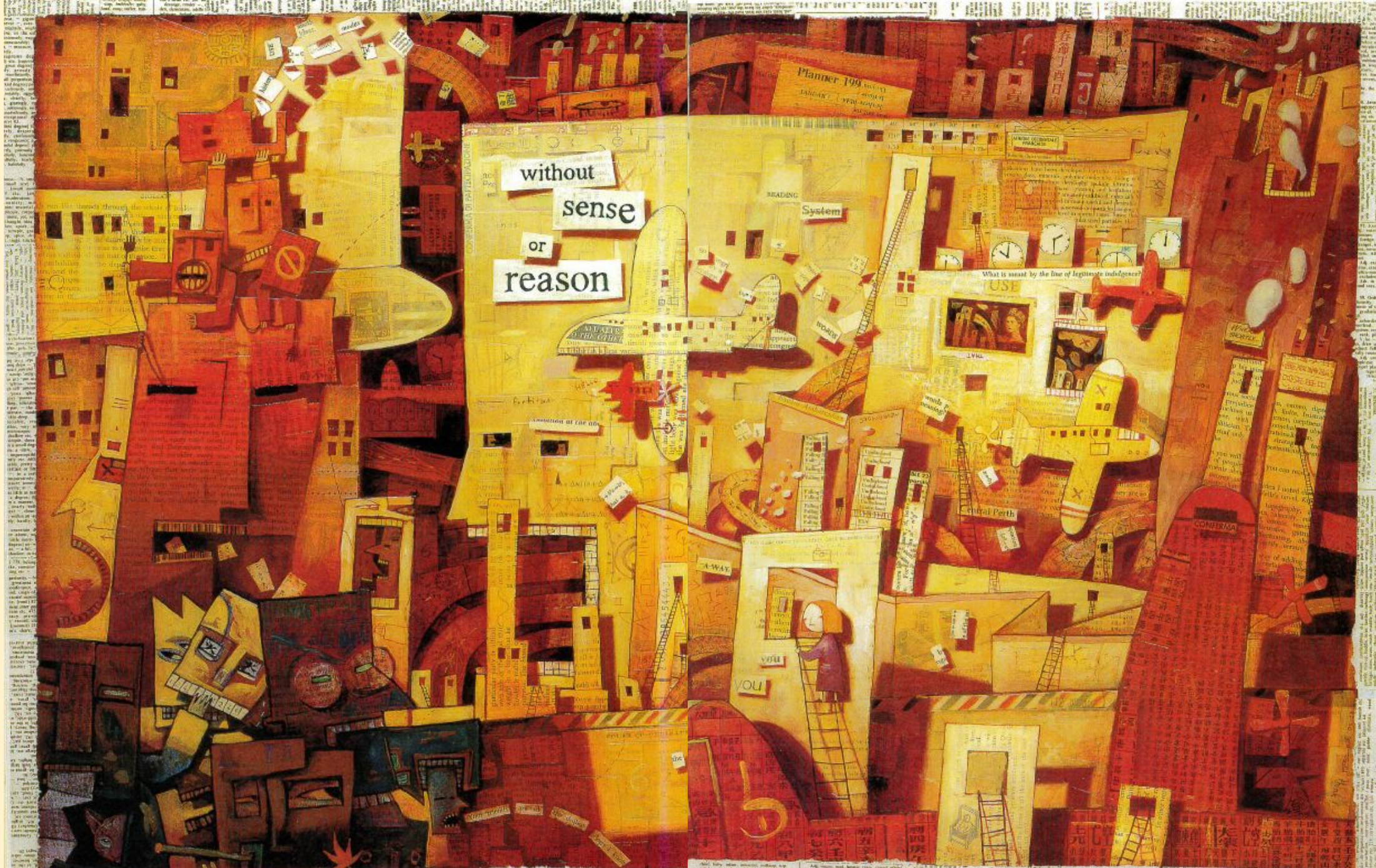
The word *tells me

What does it mean to
infer?

Can you remember
any of our sentence
stems?

the world is a
deaf machine





without
sense
or
reason

Planner 199
JANUARY 1990
AUS

READING
System

What is meant by the line of legitimate indulgence?

USE

Central Perth

CONFIRM

YOU



sometimes you wait



and wait



and wait



and wait



and wait



and wait

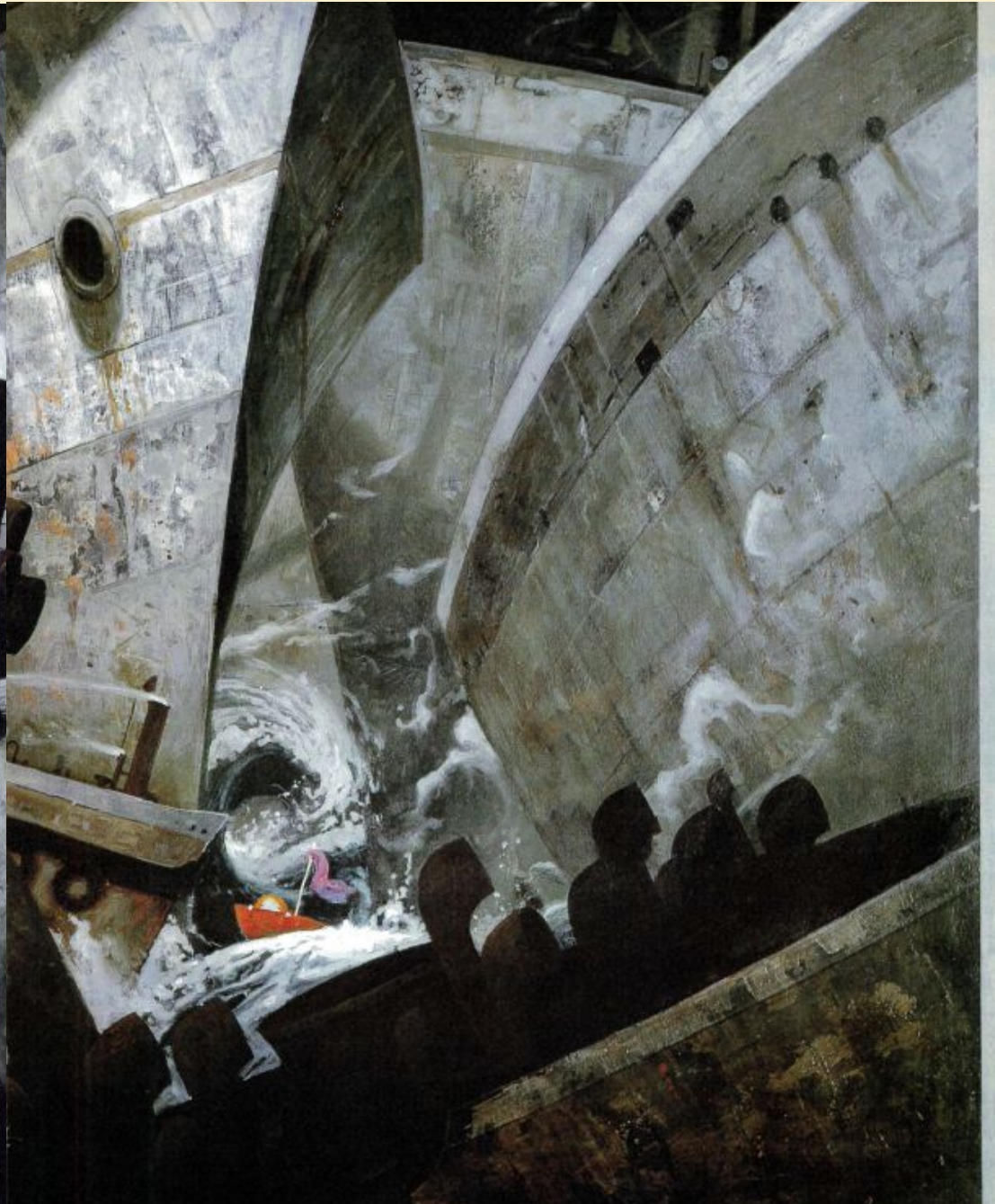


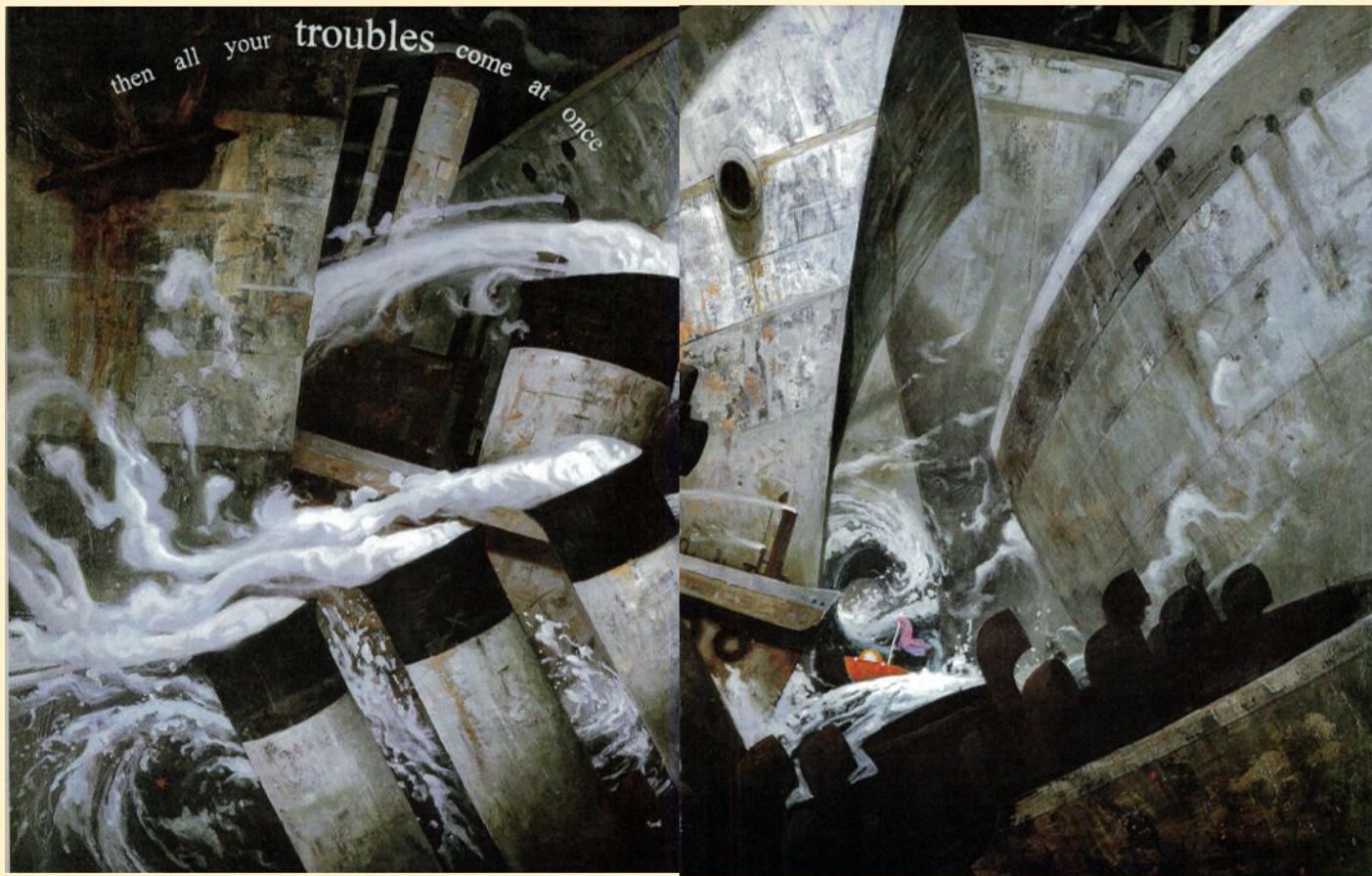
and wait



but nothing ever happens

then all your troubles come at once





How do you think the little girl is feeling in this part of the story?

Inferring stems

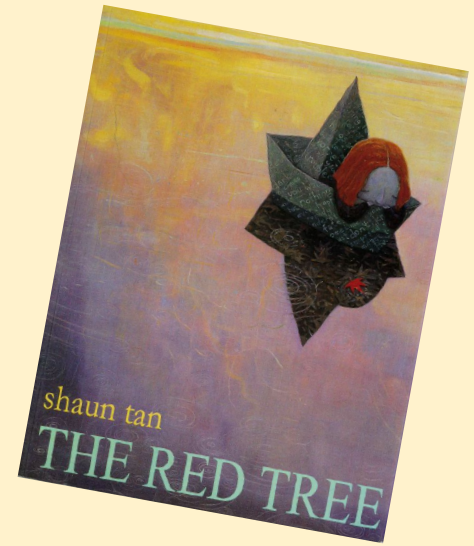
- I think this character...
- ... makes me think that...

Use the sentence stems to help you.

Thursday

Our reading strategy is...

Inferring



Inferring Stems

The word *tells me

What does it mean to
infer?

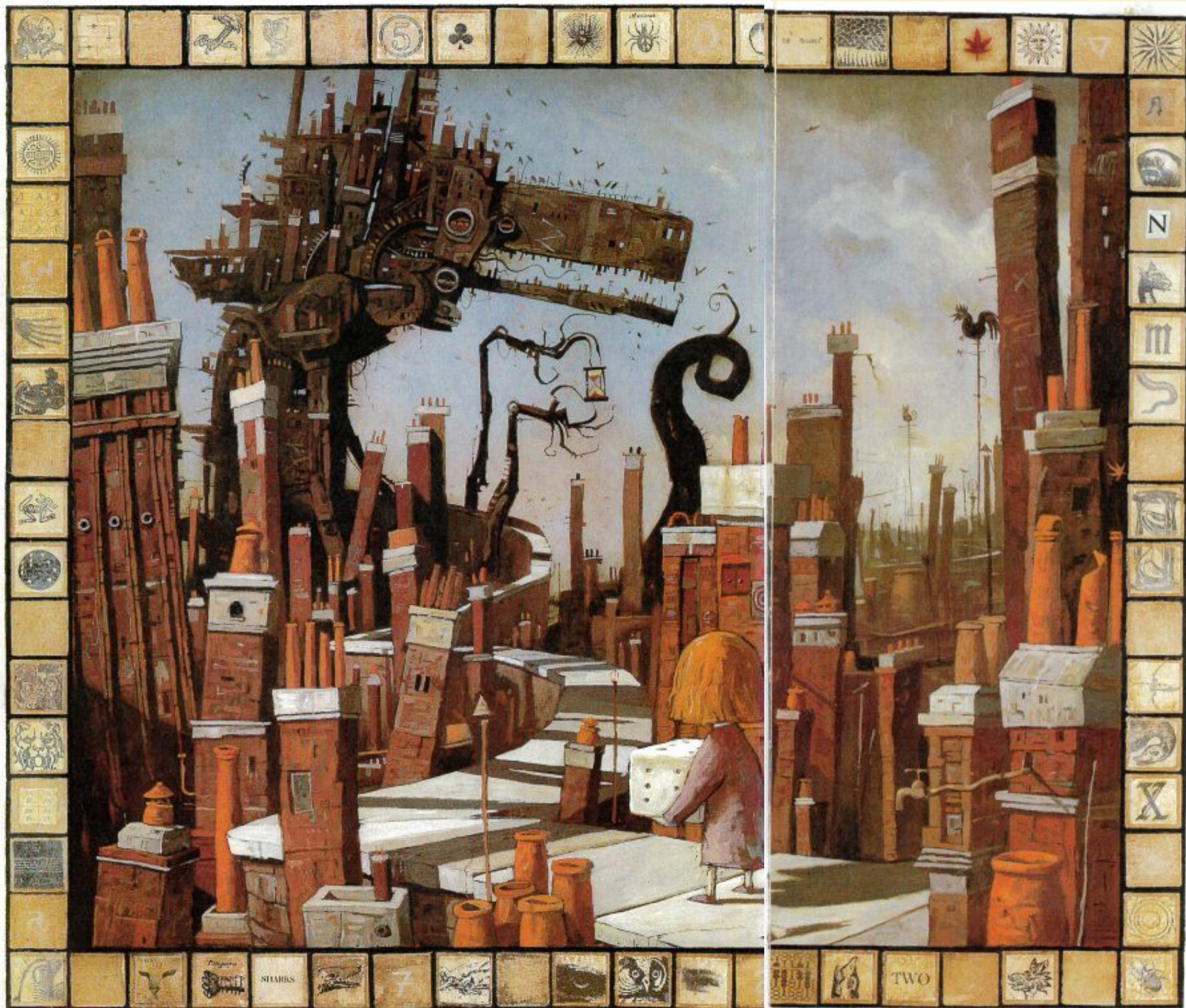
Can you remember
any of our sentence
stems?

wonderful things
are
passing

you

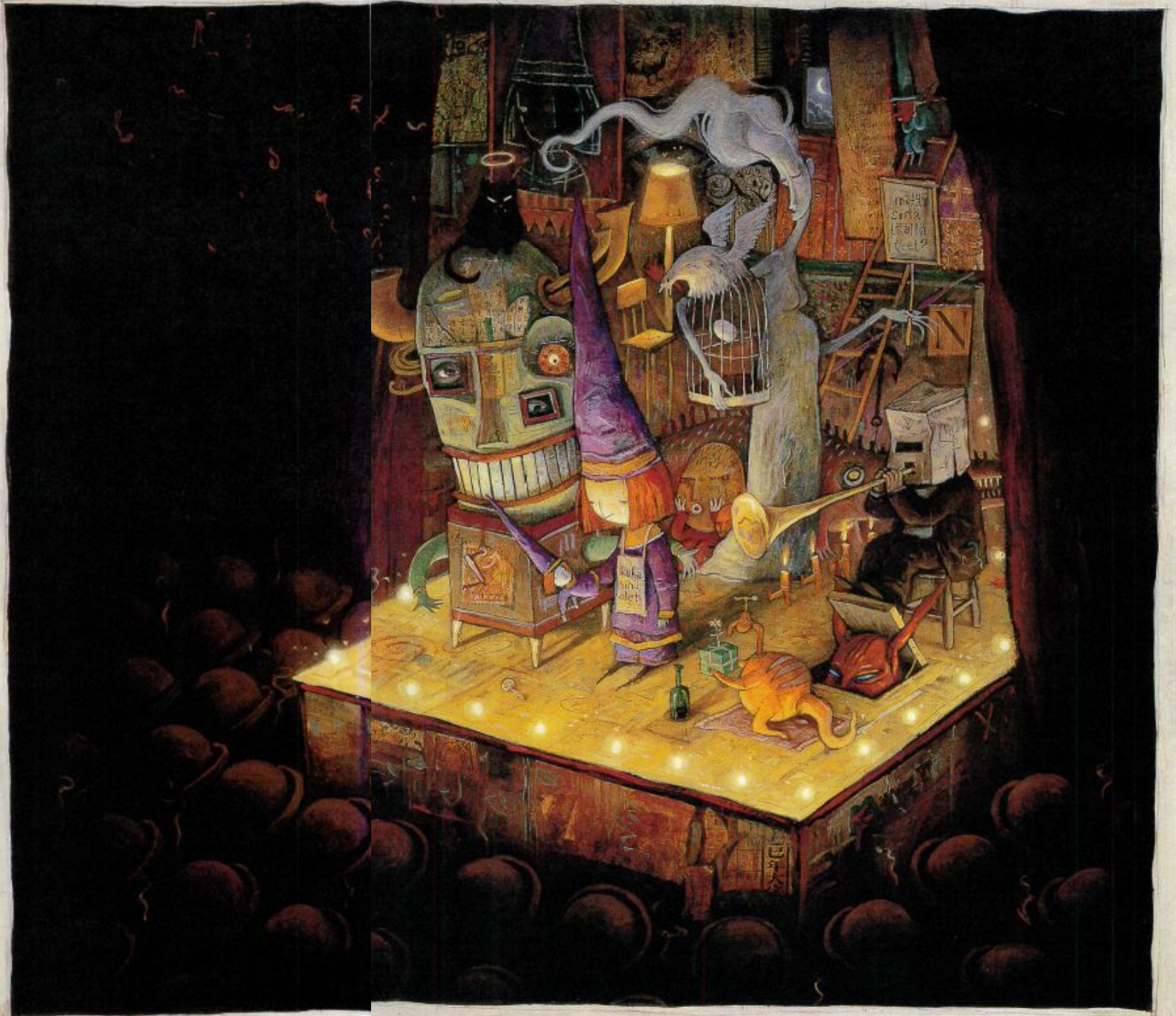
by





terrible fates are
inevitable

sometimes
you just don't know
what you are
supposed to
do



or

who

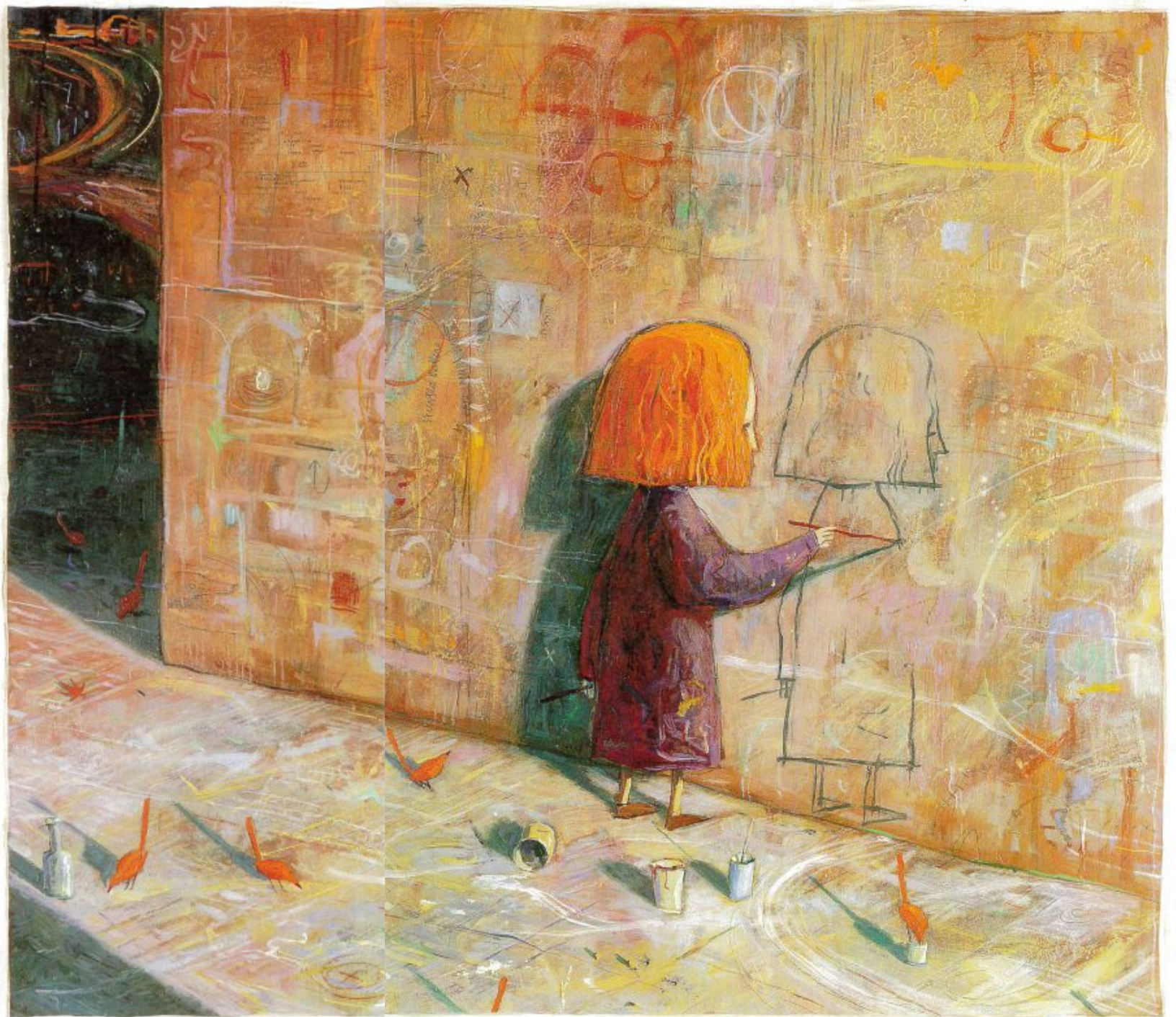
you

are

meant

to

be

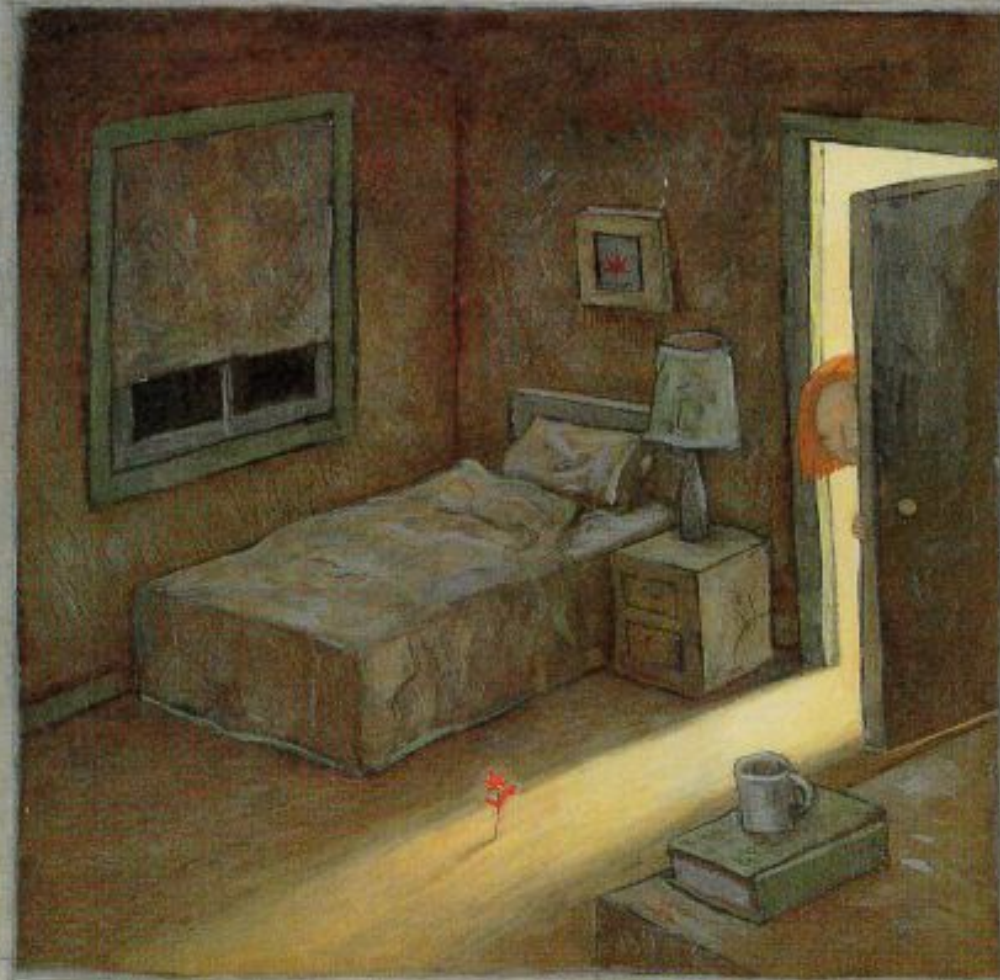


or

where
you are



and the day seems to end
the way it began

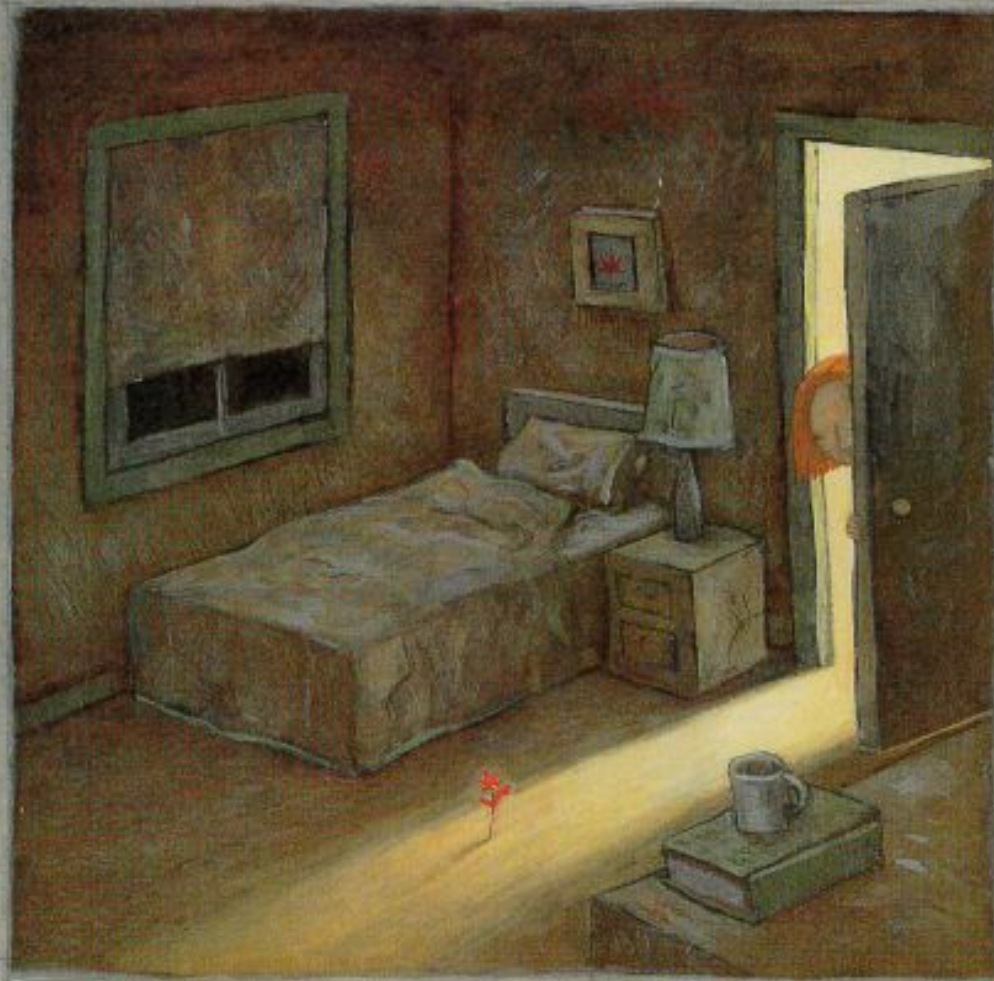


but suddenly there it is
right in front of you
bright and vivid
quietly waiting

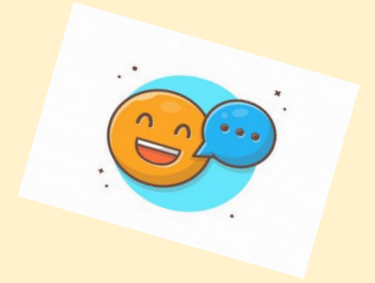
Let's review...

What is a setting?

A setting is where a story takes place. The setting could be a small, dusty village or a deep, dark wood.



but suddenly there it is
right in front of you
bright and vivid
quietly waiting



Describe the setting for
this part of the story?

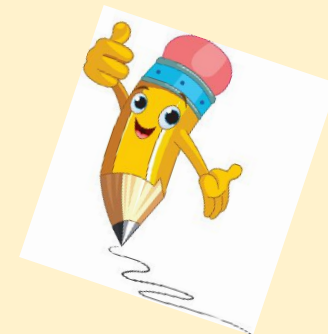
Inferring stems

- I think the setting is...

Let's review...

What is the mood of a story?

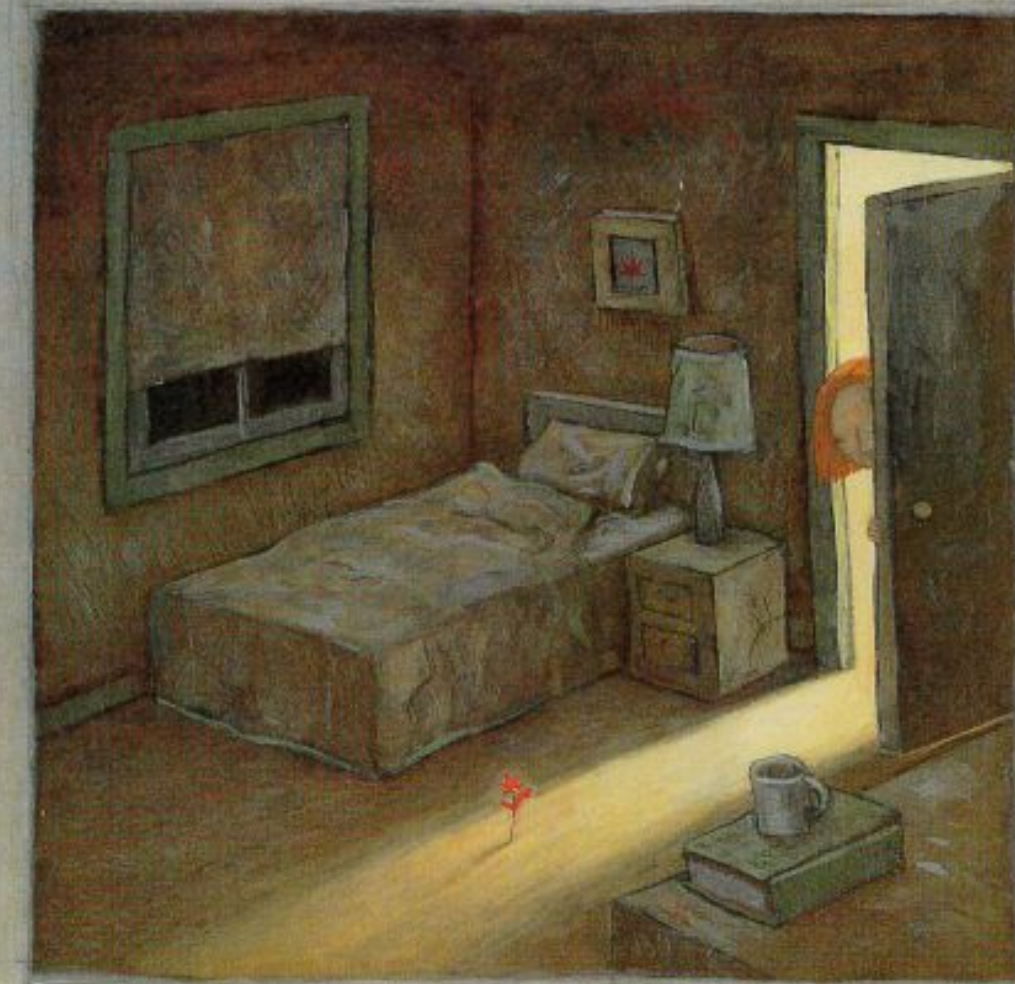
The mood of the story is how the setting, characters and events in the story make the reader.



What do you think the mood of this part of the story is?

Inferring stems

- I think the mood is...

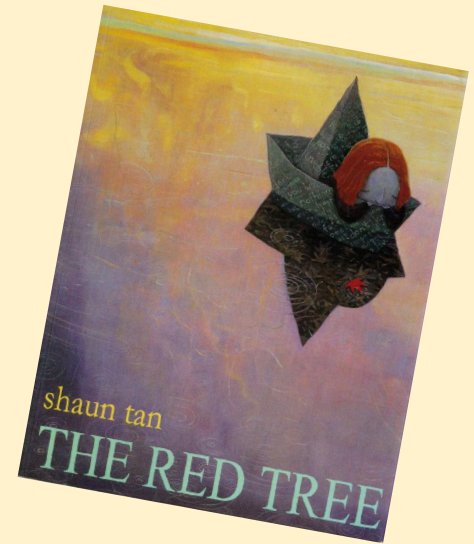


but suddenly there it is
right in front of you
bright and vivid
quietly waiting

Friday

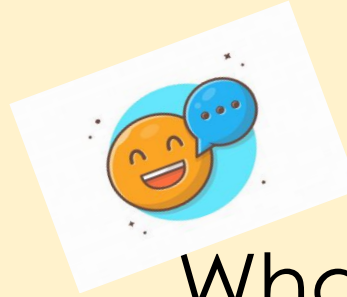
Our reading strategy is...

Inferring



Inferring Stems

The word *tells me



What does it mean to
infer?

Can you remember
any of our sentence
stems?



How do you think the little girl is felt when she found the tree?

Inferring stems

- I think this character...
- ... makes me think that...



just as you imagined it would be

Can you use the conjunction because to explain why?